

Diversity Data on Faculty Members and Full-Time Undergraduates

Fall 2021

When reporting campus population data to the federal government, institutions must use a set of categories that blend race, ethnicity, and citizenship. For example, non-U.S. citizens are reported as such, regardless of their race/ethnicity. The tables below show those figures as well as the ones that result when we count our non-U.S.-citizen students and faculty members by their race/ethnicities. These methods of counting yield two different measures of student and faculty diversity, neither of which is necessarily more accurate. For some purposes, we are interested in knowing our percentage of U.S. students and faculty of color, and for other purposes, we want to know about people of color in general. (Note that students and faculty members counted as U.S. citizens include foreign-born, naturalized citizens; permanent residents; and dual citizens.)

FALL 2021 FULL-TIME FACULTY MEMBERS

	ONLY U.S. CITIZENS COUNTED BY RACE/ETHNICITY		ALL FACULTY COUNTED BY RACE/ETHNICITY	
	#	%	#	%
American Indian or Alaska Native	0	0.0%	0	0.0%
Asian	18	10.2%	25	14.1%
Black or African American	8	4.5%	10	5.6%
Hispanic or Latino	11	6.2%	12	6.8%
Native Hawaiian or Other Pacific Islander	0	0.0%	0	0.0%
Two or more races	0	0.0%	0	0.0%
White	126	71.2%	129	72.9%
Race unreported	1	0.6%	1	0.6%
Non-U.S. citizens	13	7.3%		
TOTALS	177	100.0%	177	100.0%

% U.S. citizen faculty of color	20.9%
% faculty of color	26.6%

Source: Office of Institutional Research tallies using Common Data Set guidelines

FALL 2021 FULL-TIME UNDERGRADUATES

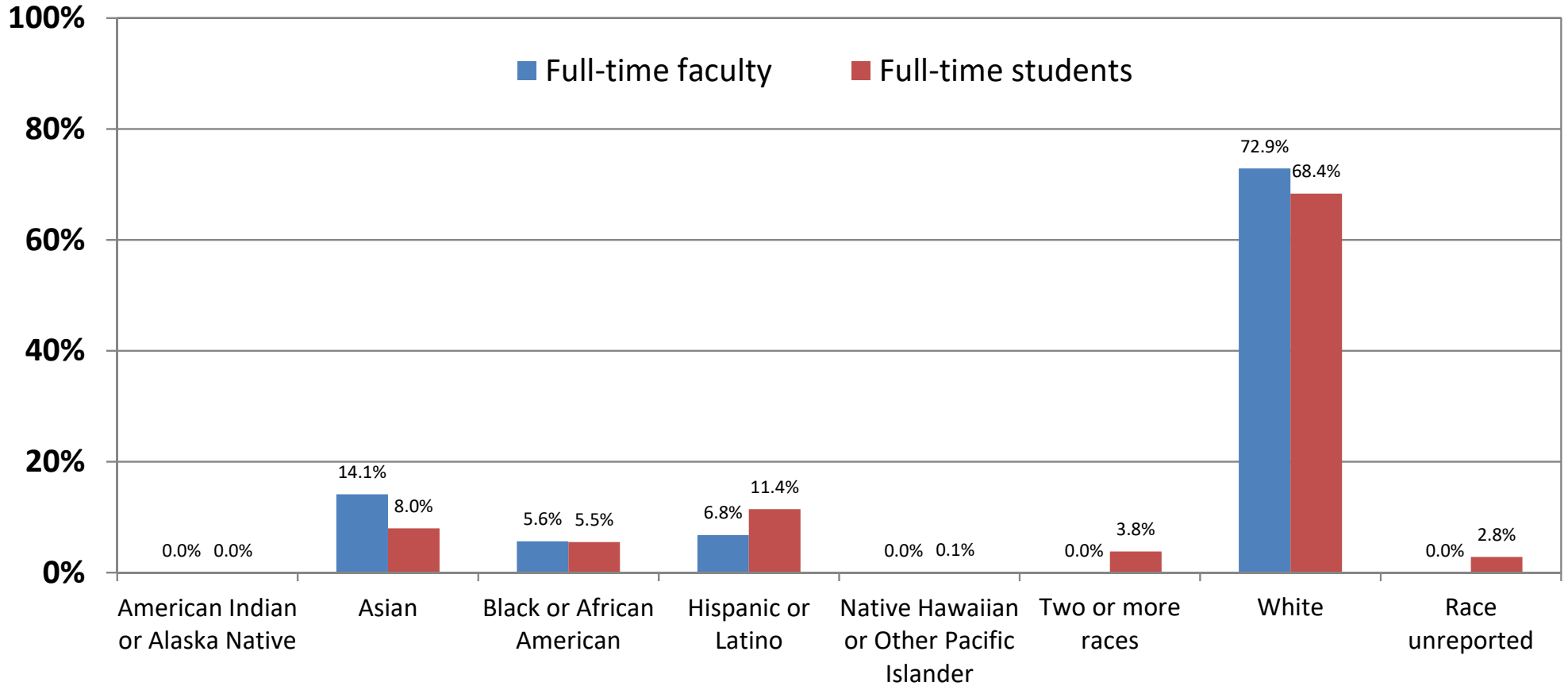
	ONLY U.S. CITIZENS COUNTED BY RACE/ETHNICITY		ALL STUDENTS COUNTED BY RACE/ETHNICITY	
	#	%	#	%
American Indian or Alaska Native	0	0.0%	0	0.0%
Asian	67	3.7%	145	8.0%
Black or African American	82	4.5%	100	5.5%
Hispanic or Latino	194	10.7%	207	11.4%
Native Hawaiian or Other Pacific Islander	1	0.1%	1	0.1%
Two or more races	63	3.5%	69	3.8%
White	1,208	66.7%	1,238	68.4%
Race unreported	36	2.0%	51	2.8%
Non-U.S. citizens	160	8.8%		
TOTALS	1,811	100.0%	1,811	100.0%

% U.S. citizen students of color	22.5%
% students of color	28.8%

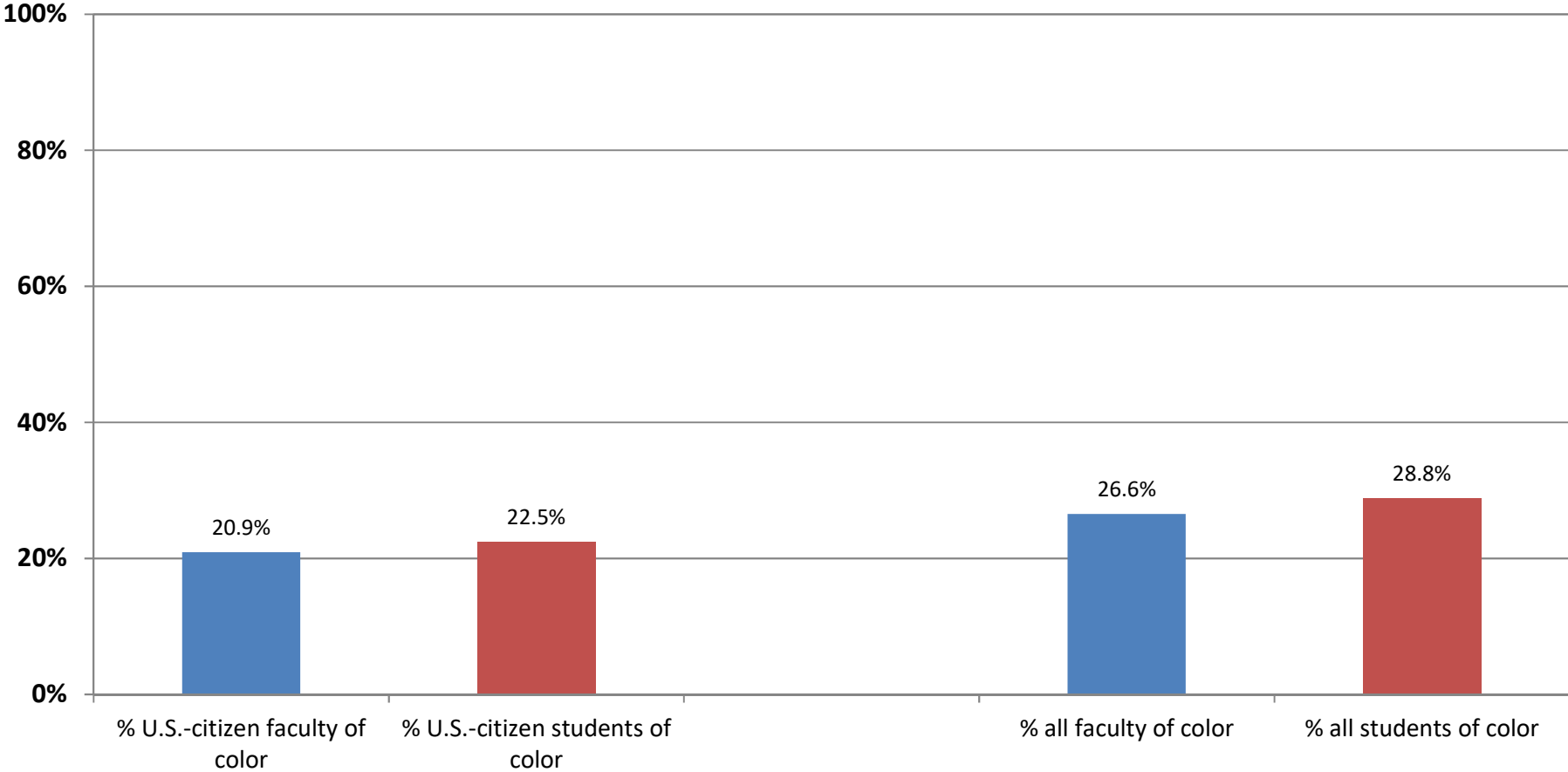
Source: Office of the Registrar, IPEDS Fall Enrollment Survey 2021

Fall 2021 Full-Time Faculty Members' and Students' Race/Ethnicity

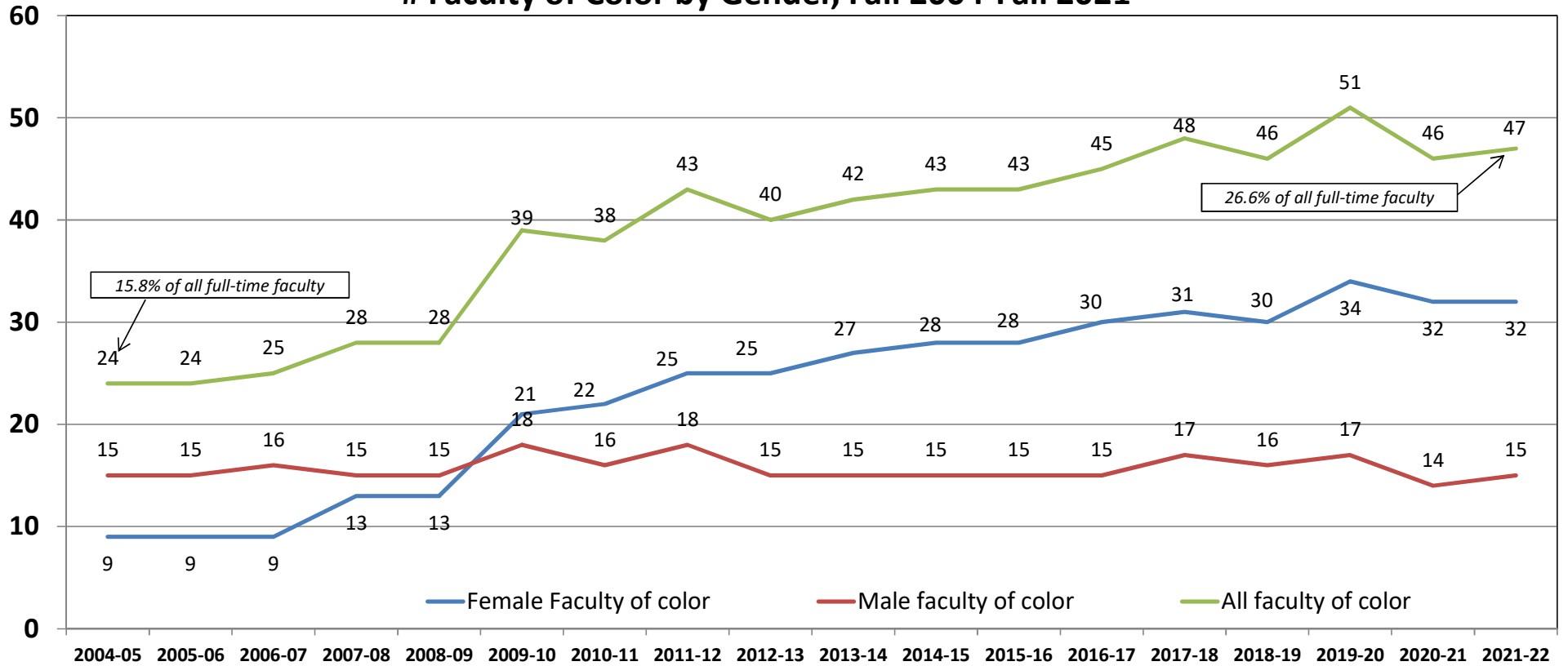
Non-U.S.-citizen faculty members and students are counted here by their race/ethnicity



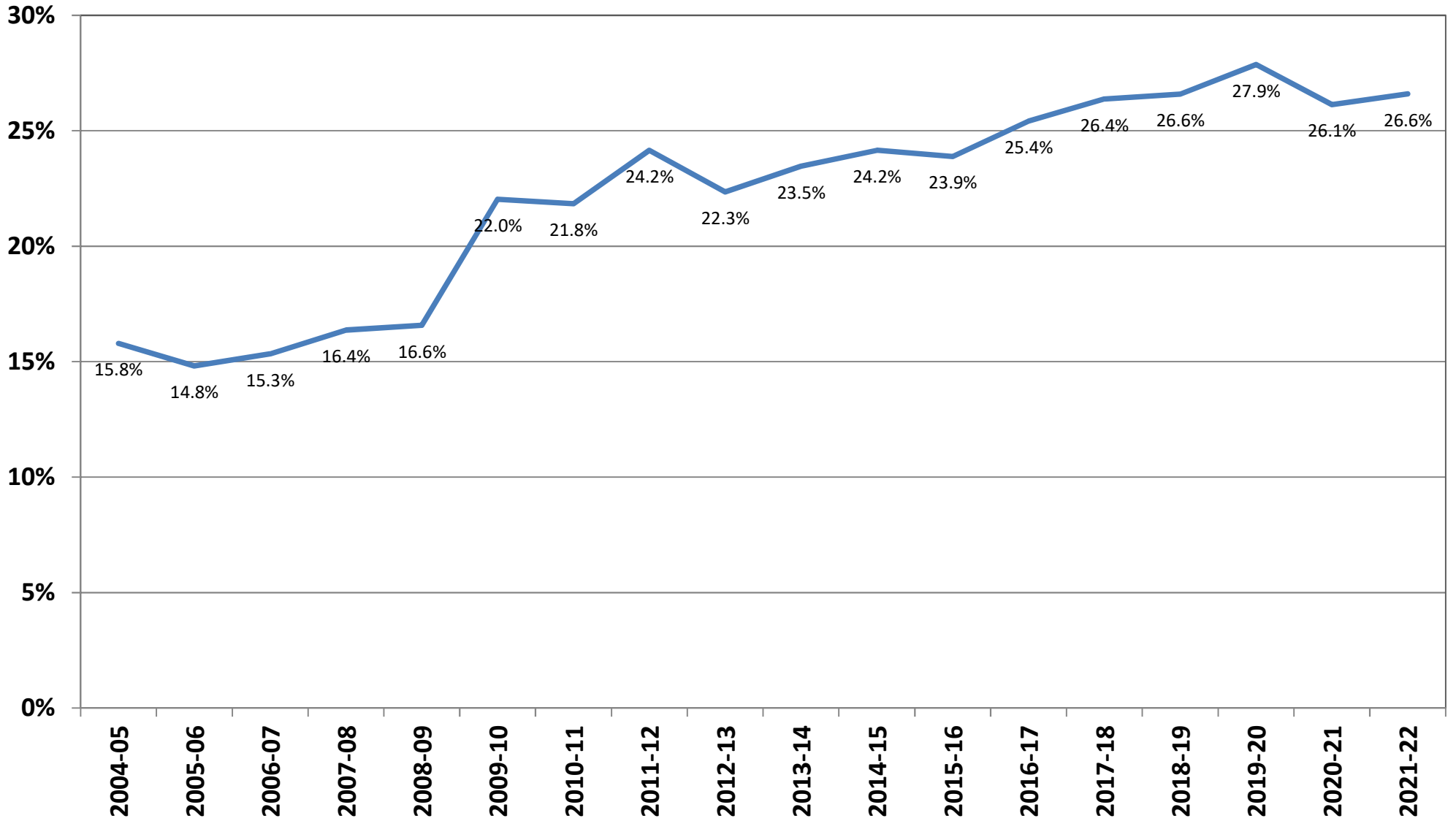
Fall 2021 Faculty and Students of Color



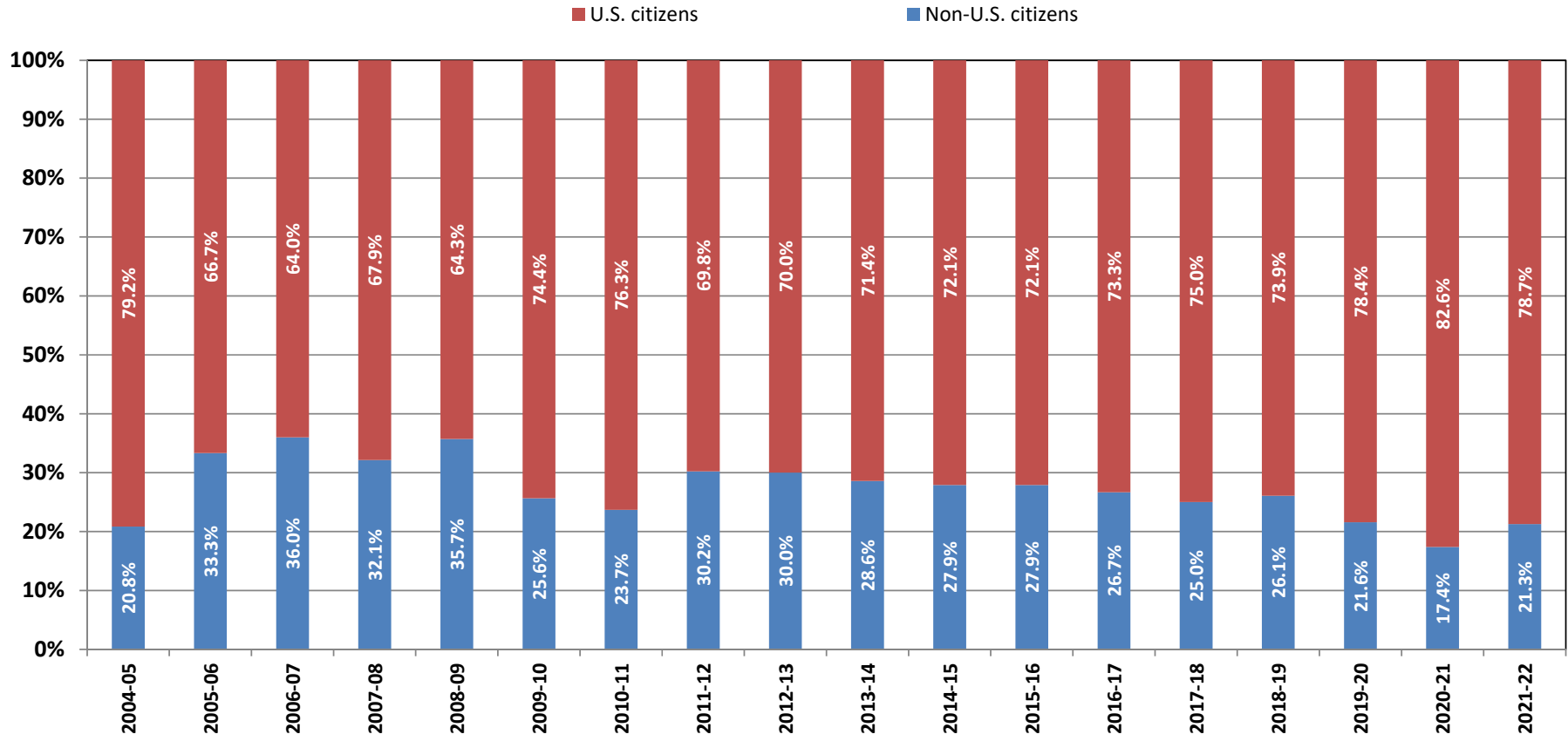
Faculty of Color by Gender, Fall 2004-Fall 2021



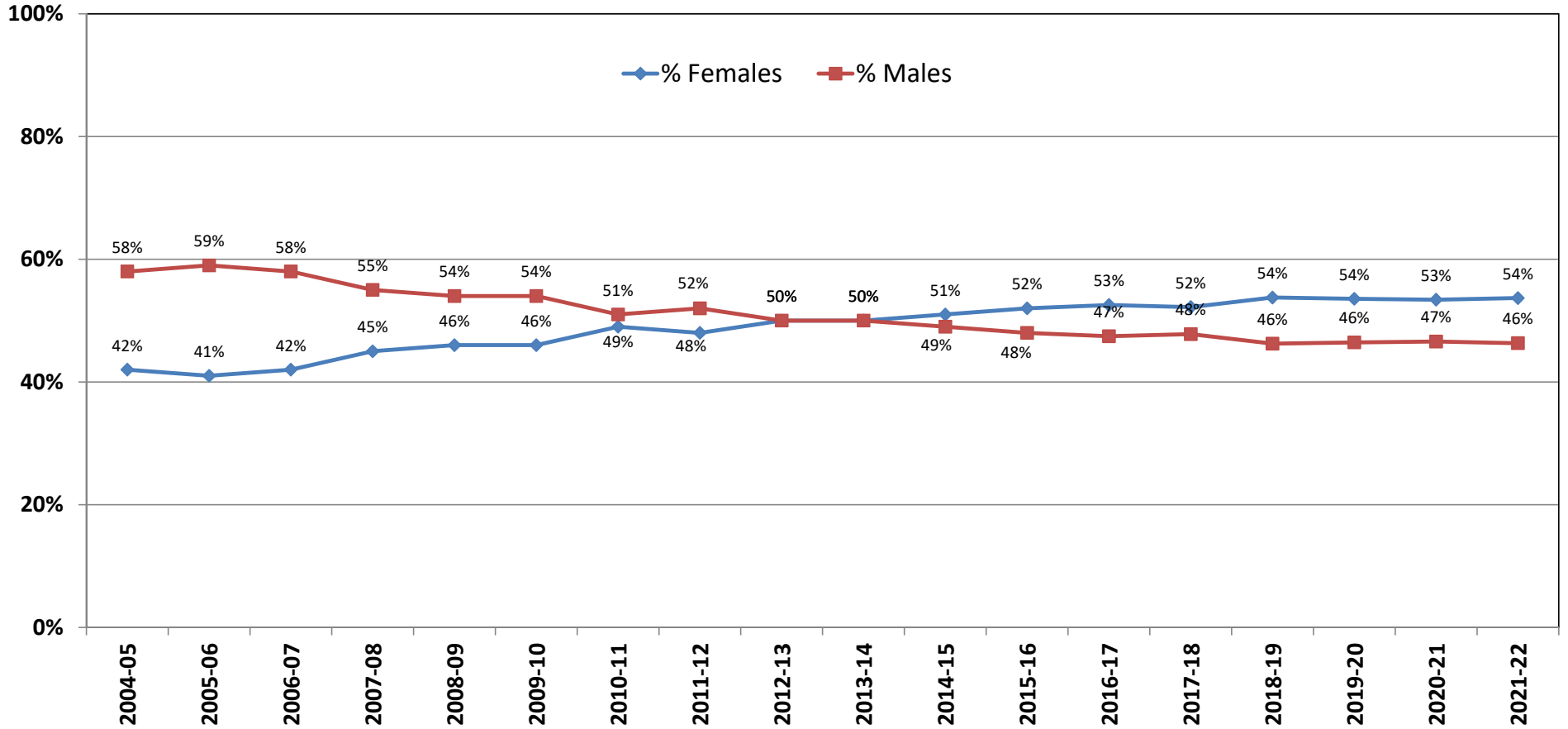
Percentage of Full-Time Faculty who are People of Color, Fall 2004 to Fall 2021



Connecticut College Faculty of Color, AY 2004-05 to Present

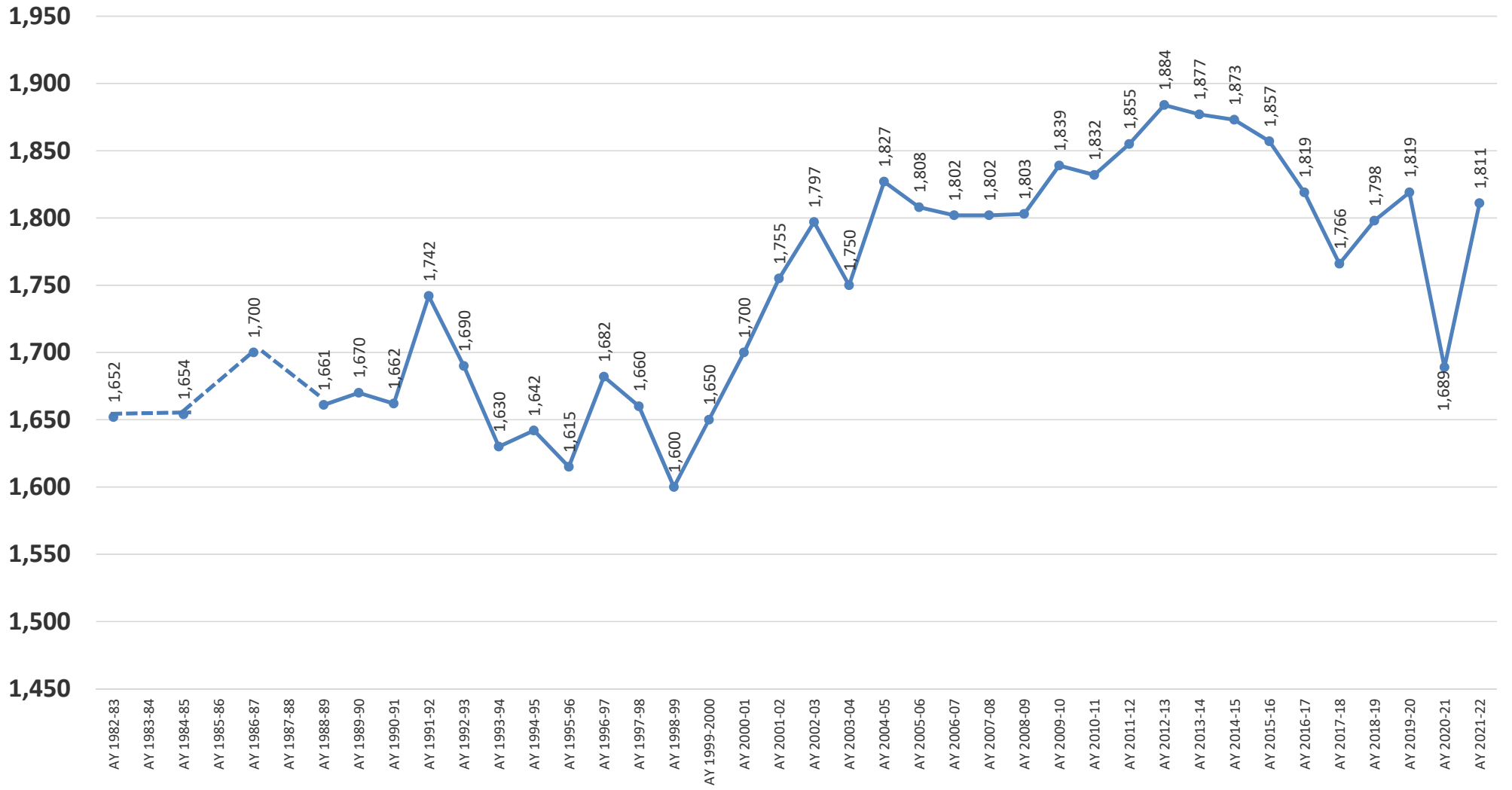


Gender Composition of Connecticut College's Full-Time Faculty, 2004-05 to 2021-22

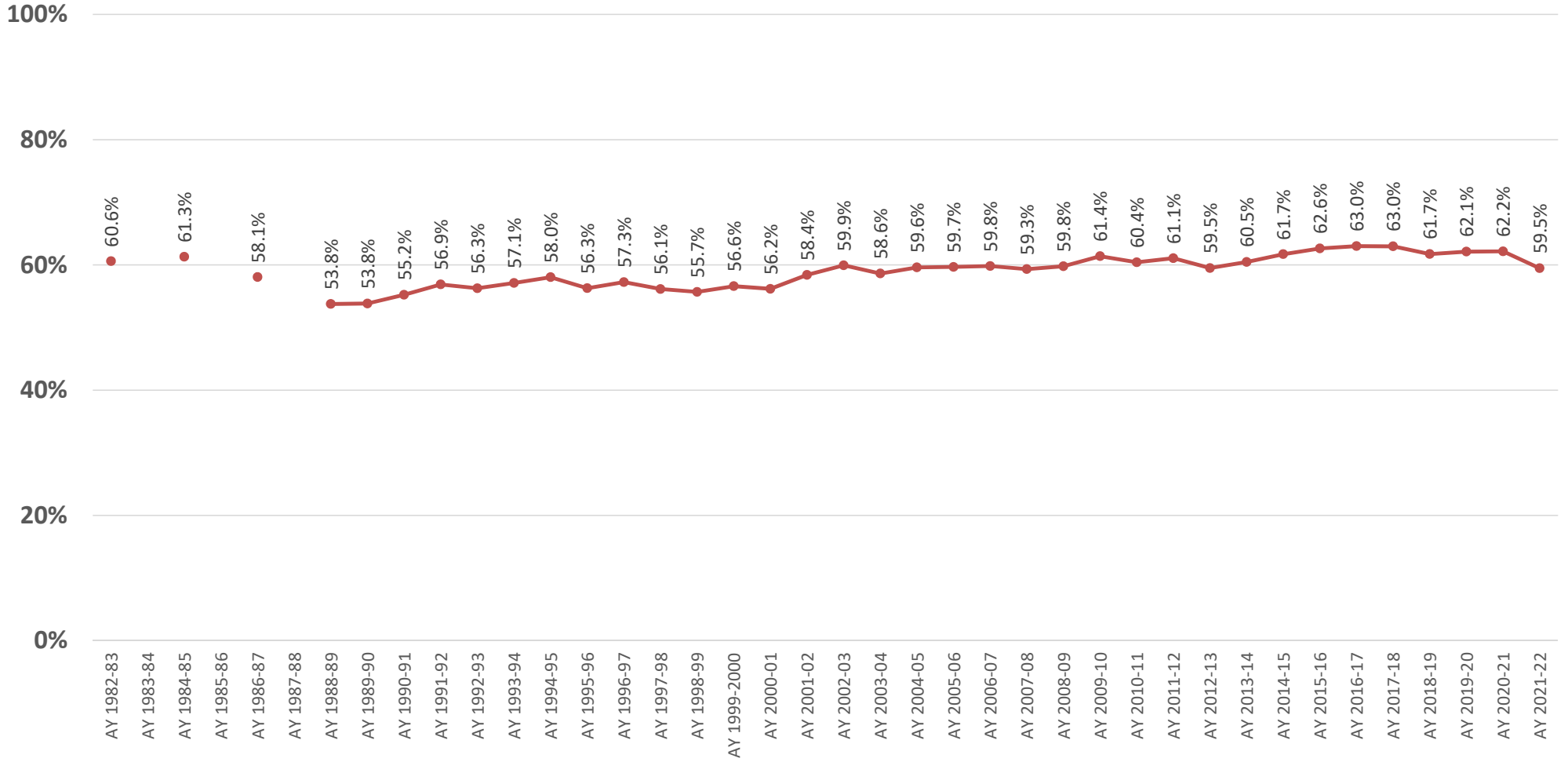


Connecticut College Full-Time Undergraduates

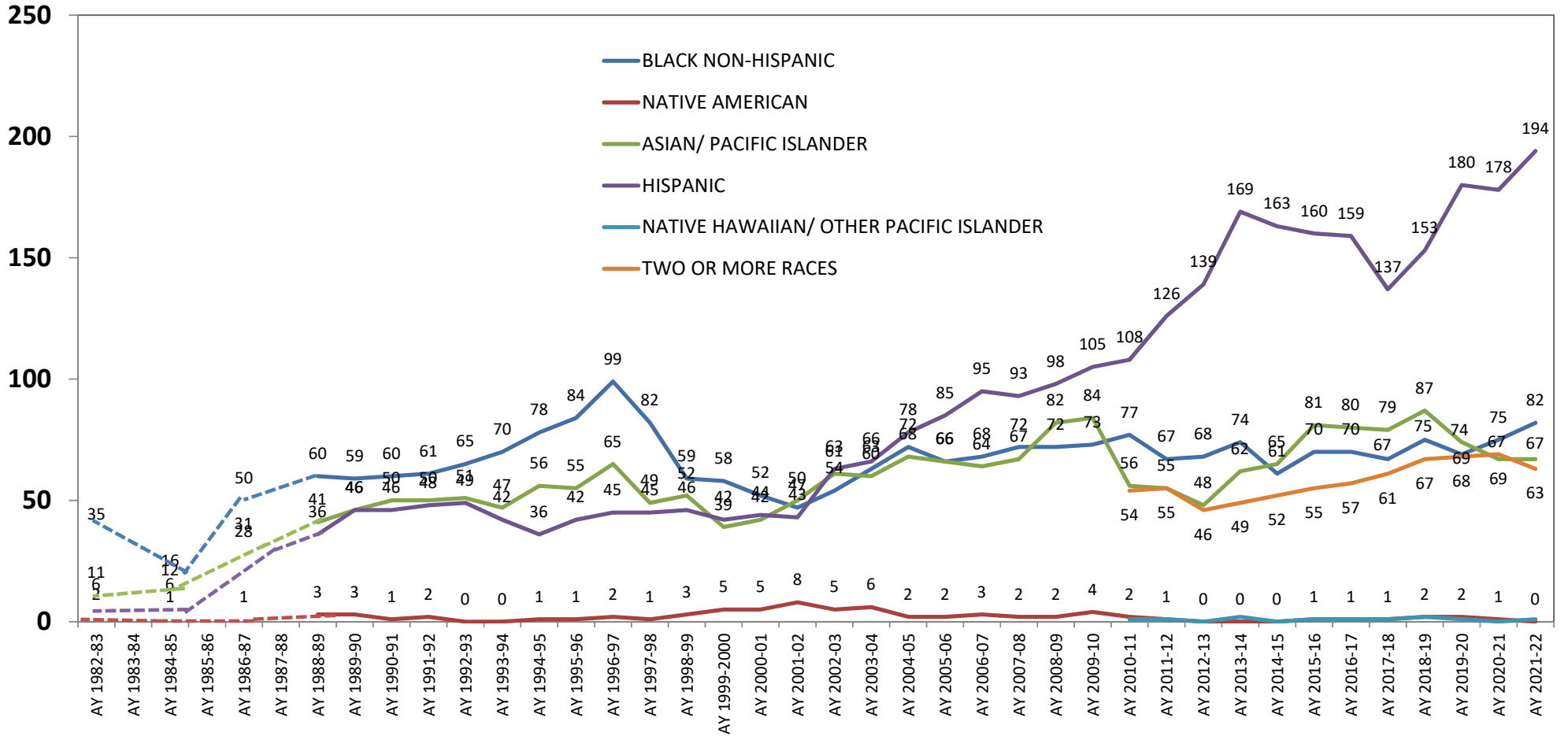
(Source: IPEDS Fall Enrollment Surveys)



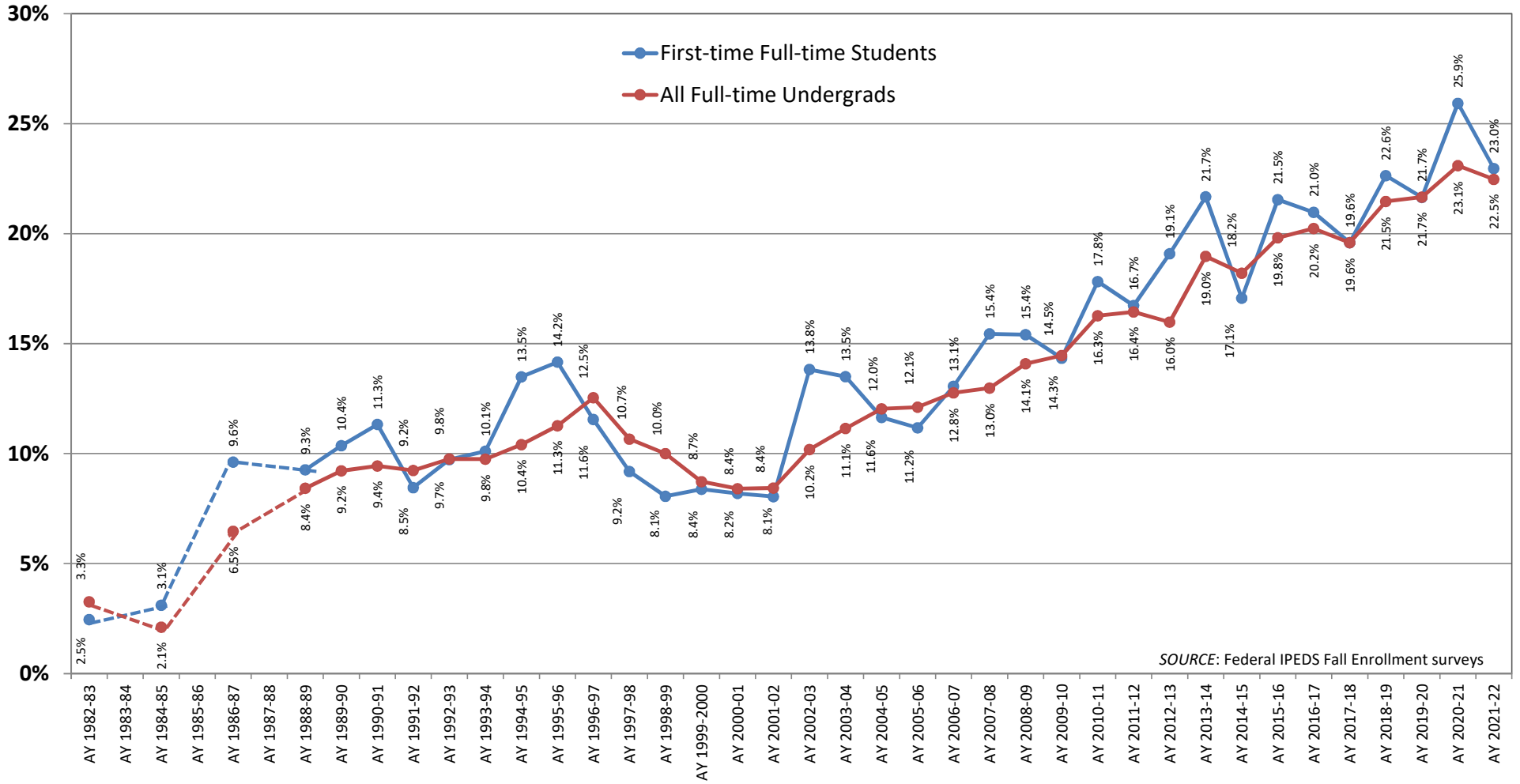
% of all Full-Time Undergraduates Who Were Female



Numbers of Full-Time Undergraduate U.S. Students of Color



Historical Percentage of U.S. Students of Color, Fall 1982 to Fall 2021



International Students as a % of all Full-Time Undergraduates

